



DESCRIPTION

Builder: Nobiskrug
Built/Refit: 2008/
Length: (m/ft) 73.52 / 241'02"
Cabins: 6
Guest: 12
Crew: 16
Cruising Speed: 14.5 knots / 17 Max
Location: Cannes, France

Sales Price: POA

All yachts offered are subject to still being available. Yacht particulars are believed to be correct but their contents are not guaranteed, neither may they be used for any contractual purposes. Specification provided for information only. Subject to prior sale, price change or withdrawal from market without notice.

MAIN CHARACTERISTICS

TYPE	Twin Screw Diesel Yacht		
FLAG	Cayman Islands		
DIMENSIONS	Length O.A.	73.52m	(241.22ft)
	Length W.L.	64.20m	(210.63ft)
	Beam	12.60m	(41.34ft)
	Draft	3.65m	(11.98ft)
TONNAGE	Gross	1585 Tons	
	Net	414 Tons	
	Displacement	1500 Tons	
YEAR BUILT	2008		
BUILDER	Nobiskrug		
NAVAL ARCHITECT	SDC & Nobiskrug		
EXTERIOR DESIGNER	Newcruise Design		
INTERIOR DESIGNER	Newcruise Design		
CONSTRUCTION	Steel Hull, Steel Superstructure, Teak Laid Decks		
CLASSIFICATION	Germanischer Lloyd +100 A5 CMCA + MC Y + AUT (UMS) MCA Compliant		

MECHANICAL EQUIPMENT

MAIN ENGINES	2 x MTU 16V4000M60 2,360 BHP (1760 KW) each @1,800 rpm
ENGINE HOURS	<u>May 2009</u> Port: 1707 hours Starboard: 1707 hours
GEAR BOXES	ZF
SHAFTS & PROPELLERS	Piening, 5 bladed fixed pitch propellers
SPEEDS & FUEL CONSUMPTIONS	Max Speed 17.1 knots Cruising Speed 14.5 knots 450 Litres per hour at 14.5 knots 680 Litres per hour at 17 knots
RANGE	5000 NM

AUXILIARY MACHINERY AND ELECTRICAL SYSTEM

GENERATORS	2 x MAN D2876 LE 301 (252kw each) 1 x MAN D2866 LXE 30 (171kw)
EMERGENCY GENERATOR	1 x MAN D2866 (112kw)
GENERATOR HOURS	699, 2304, 4888
ELECTRICITY	400 V, 50 Hz / 230 V, 50 Hz / 24 V DC
SHORE POWER	250 KVA Transformer
BATTERIES	6 Mastervolt Battery chargers for the six main banks of Gel batteries, these are for the Main engines, three Generators, Emergency generator and Emergency GMDSS Batteries.

TANK CAPACITIES (approximate)

FUEL	182,000L	(76,609 US Gallons)
WATER	43,600L	(11,517 US Gallons)
WATERMAKERS	2 X Idromar IDM20 combined production of 40,000L (10,566 US Gallons) per day	
LUB OIL	3,300L	(871 US Gallons)
DIRTY LUB OIL	1,300L	(343 US Gallons)
GREY WATER	24,800L	(6,551 US Gallons)
BLACK WATER	2,500L	(660 US Gallons)

ANCILLARY EQUIPMENT

STEERING SYSTEM	Van der Velden, 2 x Spade Rudders with independent control
RUDDER ANGLE INDICATOR	Van Der Velden
BOW THRUSTER	Schottel 195kw
STABILIZERS	4 x Fins, Quantum QC1500 Zero Speed system with pitch control.
FUEL FILTERS	NFV Treatment Unit for Main engines and Separ filters for Generators
FUEL SEPERATOR	GEA Westfalia
OIL/WATER SEPARATOR	Turbulo (Thyssen Krupp) Type: TMPB-1
FIRE/BILGE PUMP	3 X Allweiler 33m3
BOILERS	WESCO Navy GmbH
SEWAGE TREATMENT	Hamann

WC's Evac

AIRCONDITIONING Central ducted system
4 Air Handlers
4 Compressors with soft-start and frequency drives

SAFETY AND FIRE PROTECTION

SAFETY Life rafts 4 x 25-Man RFD
Lifejackets, Life Rings (SOLAS)
Flares, First Aid (SOLAS)
2 x SART, 2 x EPIRB

FIRE FIGHTING Fire Fighting York Novenco Fog System
Sapphire E/R Fixed Station –using Novec (Halon replacement gas)
Portable Fire Extinguishers in all spaces
Drencher system in tender stores (York-Novenco)
4 x Fireman’s suits with Dreger breathing apparatus.
Aft deck fixed foam hydrant for heli-pad operations

ALARMS Siemens Smoke + Fire Detection System

SECURITY CCTV System, 14 cameras, Touch Screen controls, HD recorder,
motion detection etc.
1 x under water camera
Proximity card entry control system.

COMMUNICATION EQUIPMENT

GMDSS EQUIPPED & CERTIFIED

SATCOM 2 x Satcom C
1 x Inmarsat Fleet broadband (Voice/Fax/Data)
2 x Iridium (Voice)
1 x VSAT (Data/Voice over IP)

CELLULAR SYSTEM 3 x GSM Triband (1 Fax / data)

VHF RADIOTELEPHONES 3 x VHF Radios with DSC capabilities (with 6 handsets)

SSB RADIOTELEPHONE	1 x MF / HF Radio
WATCHKEEPING RECEIVER	Multiple Hand-Held VHF & UHF Radios
TELEPHONE EXCHANGE	Panasonic Digital PABX 1 x BGAN (Fleet broadband) DECT Cordless System (total coverage)
INTERCOM SYSTEM	Steward Call System Talkback System Public Address System

NAVIGATION EQUIPMENT

GYRO COMPASS	1 x Sperry Gyro Compass
SATELLITE COMPASS	1 x Furuno Satellite Compass
AUTOMATIC PILOT	1 x Sperry Autopilot
LOG	1 x Sperry Electromagnetic Speedlog
ECHO SOUNDER	2 X Furuno Colour Sounders
RADAR	1 x S-Band Radar Sperry Bridgemaster 1 x X-Band Radar Sperry Bridgemaster
CHART PLOTTER	2 x ECDIS Chart Plotter
GPS	2 x MX GPS
NAVTEX	1 x Furuno Navtex
WIND INSTRUMENTS	5 x B+G FFD (Wind/Depth/Speed/Temp)
OTHER	4 x 23" Hatteland Screens 2 x 19" Hatteland Screens

DECK EQUIPMENT

ANCHOR WINDLASS	Steen – 2 Stainless vertical axis
AFT WARPING CAPSTANS	Steen – 2 all stainless
GROUND TACKLE	2 x Pool type fully balanced 765kg anchors. 8 Shackles (220mtrs) of chain per anchor
BOAT CRANE & DAVITS	Port Tender garage: Lifting davits and storage for one tender up to 6500 kg /12metres in length. Starboard Tender Garage: Lifting arrangements and storage for one tender of up 3500 kg / 7.5 metres length and two wave runners. 5metre rescue boat enclosed storage forward of the bridge and crane with SWL of 1650 kg. In the same area there is enclosed storage for 2 jet skis.
PASSERELLE	1x Hydromar extending and pivoting passerelle with full stainless hand railings and teak decking.
SIDE BOARDING LADDERS	Passerelle swivels to cover side boarding Additional portable gangway with teak treads, and can be fitted either Port or Starboard mid ships
SWIMMING PLATFORM	Large teak decked swim platform going full width of the stern, with solid removable stainless railing and a large solid swim ladder with teak treads.
SEARCHLIGHT	2X High power Colorlight
AWNING	Removable Sun Awnings across aft end of all deck areas.

AUDIO AND VISUAL EQUIPMENT

BASIC SUMMARY OF THE SYSTEM	The central system includes the equipment to receive terrestrial and satellite TV broadcasts (DVB-T and DVB-S) as well as a video and audio on demand server: Audio and video server system providing independent streams to
------------------------------------	---

allow concurrent viewing at all served areas, storage capacity
4.4 Terabyte, with easy storage of new DVD content and automatic
search for album cover picture and play list.
A multi-standard VCR
2 x Sky Plus HD receiver
14 x Sky Digital HD receiver
16 x DirecTV HD receiver
Feeds from the CCTV system

EACH GUEST CABIN HAS Satellite and terrestrial TV feeds
AV via local DVD/CD player, central Video and Audio and
demand
1 x CD screen with DVD/CD player

OWNER'S STATEROOM Satellite and terrestrial TV feeds
AV via local DVD/CD player, central Video and Audio and
demand
1x 50" Plasma screen
DVD/CD system
Left, centre, right speaker surround sound arrangement

OWNER'S OFFICE Satellite and terrestrial TV feeds
AV via local DVD/CD player, central Video and Audio and
demand
1 x 32" LCD screen with DVD/CD player

SUNDECK CINEMA AV via local DVD/CD player, central Video and Audio and
demand
High quality projector
DVD/CD player
1 x Crestron wireless touch controller

CINEMA Satellite and terrestrial TV feeds
AV via local DVD/CD player, central Video and Audio and
demand
1 x High quality projector
DVD/CD player
Left, centre, right speaker surround sound arrangement
Active subwoofer
1 x Crestron wireless touch controller

SALON Satellite and terrestrial TV feeds

AV via local DVD/CD player, central Video and Audio and demand
1 x 50" Plasma screen
Left, centre, right speaker surround sound arrangement
Active subwoofer
Crestron wireless touch controller

GYMNASIUM

Satellite and terrestrial TV feeds
AV via local DVD/CD player, central Video and Audio and demand
1 x 50" Plasma screen, swivel
DVD/CD system
Left, centre, right speaker surround sound arrangement
Active subwoofer
Crestron wireless touch controller

OFFICE EQUIPMENT

COMPUTERS

2 x Servers running MS Windows Server - one as a file server, one as a terminal server.
5 x Networked 20" iMac computers
(Bridge x2, Captains Cabin, Crew area, Engine room).
2 Laptops connected wirelessly to the server and the internet – For guest use.

PHOTOCOPIER/PRINTER

1x HP Fax/printer/scanner
1X A3 inkjet printer

FACSIMILE

1 x Canon Fax (as above)

DOMESTIC EQUIPMENT

MAIN GALLEY

Full MKW Specification
4 – Plate Induction Hob
2 – Plate French Hob
2 Conventional Ovens
1 x Steam Oven
1 x Induction Hood
Walk-in Cool Room
1 x Salamander Grill
1 x Microwave Oven
1 x Double Deep Fat Fryer

	<p>1 x Griddle 2 x Under Counter Fridges 1 x Dishwasher (Hobart) Walk-in Freezer</p>
LAUNDRY	<p>2 x Miele Washers 18kg 2 x Miele Dryers 23kg 1 x Miele Washer 5kg 1 x Miele Dryer 5kg 1 x Miele Roller Iron 1 x Steam Iron</p>
PANTRY	<p>Lower pantry: Ice maker, 2 x Large Bosch full height fridges, wine cooler, Espresso machine, Dish washer. Upper Pantry: Drinks fridge, ice maker, dish washer, Espresso machine.</p>
SUNDECK	<p>Sundeck bar is equipped with an Ice machine a drinks fridge and a gas BBQ.</p>
AFT PEAK / LOWER DECK	<p>Beach club as is equipped with a drinks fridge and sink, an ice machine is near by in the tender garage.</p>
MAIN DECK BAR	<p>Equipped with a sink, an ice bucket, drinks fridge and stowage for drinks bottles.</p>

OTHER EQUIPMENT

JACUZZI DIP POOL	<p>E & S Aqua - 2200 litres heated</p>
SHIP'S SAFES	<p>1 x Safe in Owners suit 1 x Safe in Captain's Cabin</p>
BARBEQUE	<p>1 x Gas BBQ installed behind the bar on the Sundeck 1 x Portable BBQ for beach parties etc</p>

TENDERS AND WATER SPORTS

TENDERS	<p>1 x 12m Chase (2 x 300 bhp diesels)</p>
----------------	--

	1 x 7.5m Novurania Custom Line 1 x 5m Nautica
OTHER	2 x Wave runners (3-man) 2 x Jet skis (stand-up) 2 x Laser Sailing Dinghies
WATERSPORTS	2 x Wakeboards 4 x Pairs of Water-skis (assorted sizes) 3 x Inflatable doughnuts 2 x Inflatable kayaks
DIVING EQUIPMENT	6 x complete sets of SCUBA Equipment plus 1 x Bauer Compressor (250L Per minute)

ACCOMMODATIONS

OWNER	<p>The owners' suite covers the full width of yacht just forward of amidships and has 2 full height windows on both sides, these look out 3 metres from the surface of the water and have full blinds to prevent ingress of unwanted light. The bed is 2metre x 2metre bed. You can access his and her bathrooms through the modest sized dressing room. Both Bathrooms have toilets hand basins and drencher showers, additionally Hers has a large bath.</p> <p>The Owners office is annexed to the Starboard side and aft of the master cabin, and can be partitioned off. It has a king-sized Pullman bed which hinges out of the wall. This space also contains an independent Bathroom with shower.</p>
GUESTS	<p>3 x Double cabins on the lower-deck with en-suite bathrooms including toilet, shower and bath</p> <p>1 x Twin cabin on the lower deck with en-suite bathroom including toilet, shower and bath</p> <p>1 x Double cabin the Bridge deck with en-suite bathroom including toilet and shower</p>
CREW	<p>Crew accommodation for 16/17 crew.</p> <p>All crew accommodation with the exception of the Captains cabin is on the lower-deck forward of amidships. The Captains Cabin is on the Bridge deck directly aft of the wheel house.</p> <p>5 x twin cabins with en-suite shower and toilet</p>

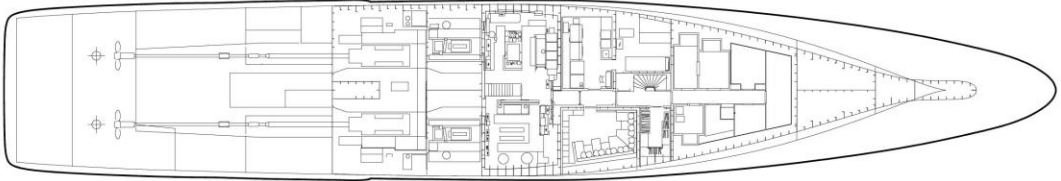
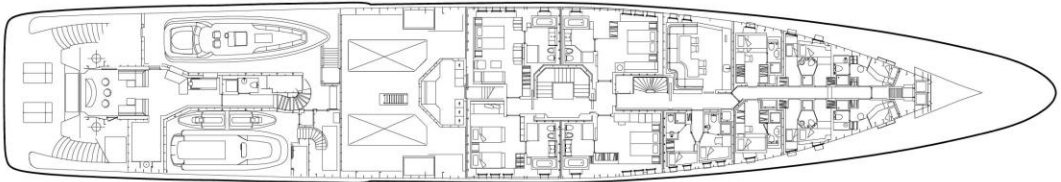
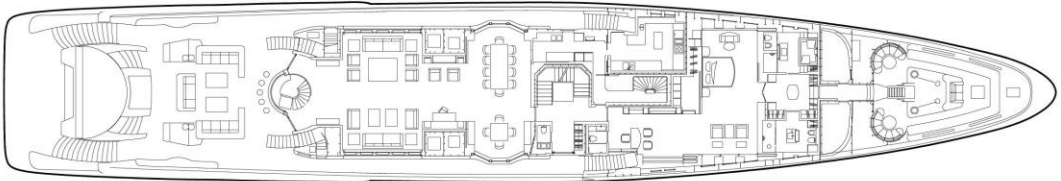
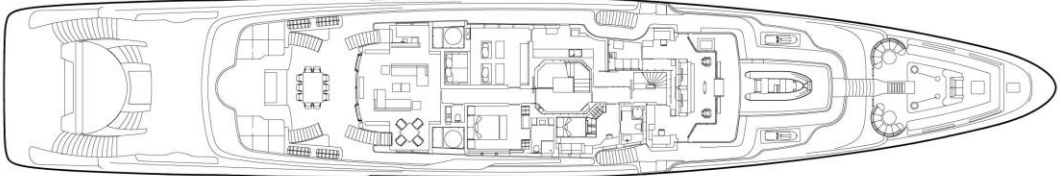
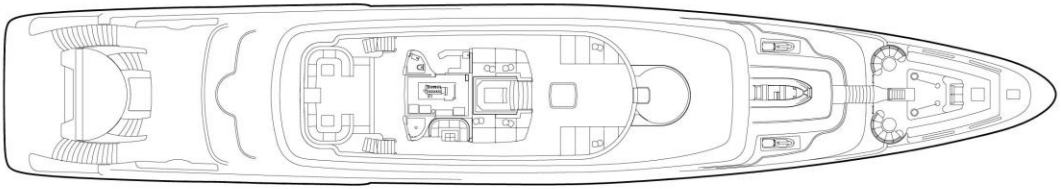
4 x Single cabins with shared shower and toilet
1 x Single cabin with en-suite shower and toilet
1 x Double Captains cabin with en-suite shower and toilet

REMARKS

The stern of the vessel is equipped with a full size folding helicopter pad, which doubles as sun lounging area when not in use as a helipad.

The bow of the vessel is installed with an underwater camera pointing directly forward designed for viewing underwater wildlife, specifically dolphins, when they swim in front of the yacht whilst underway.

All speeds, measurements, capacities, consumptions, etc. may be approximate or estimated. Specifications provided for information only. Data was obtained from sources believed to be reliable and is not guaranteed by owner or brokers. Buyer assumes the responsibility to ascertain the correctness of all data contained herein and otherwise provided and must instruct his agent and surveyors to confirm all details for accuracy prior to purchase. Subject to prior sale, price and inventory change, or withdrawal from market without notice.





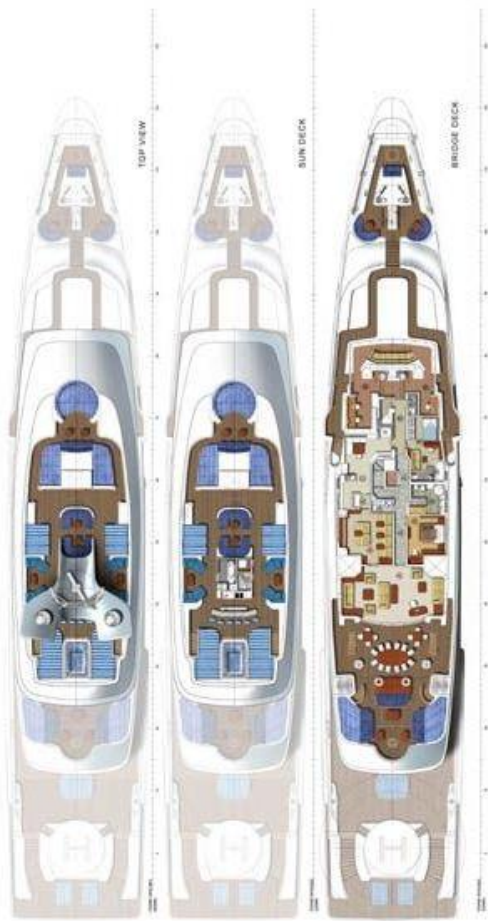












 CANNON DESIGN GROUP ARCHITECTURAL DESIGN GROUP	
PROJECT: BRIDGE DECK	DATE: 10/10/10
DRAWING NO.: 100-000-000	SCALE: 1/8" = 1'-0"
DRAWN BY: ...	CHECKED BY: ...
PROJECT MANAGER: ...	PROJECT NO.: ...

