

# THE LANCASTERS

HYDE PARK



## The Lancasters Bayswater, London

- Highest Quality
- Wonderful view over the Hyde Park
- Beautiful Landscaped Gardens
- Underground Valet Parking
- Gym
- Swimming Pool
- Spa

The majority of the 77 homes face south with views onto, or across Hyde Park. Each home has been designed around the grandeur of the original architecture and interior features of the building, such as high ceilings, ornate cornicing and fireplaces

Leasehold 999 AET

## Prices and Availability

House (Block) No.	Apt No.	Floor	No of Beds.	Views	GIA Sq M	GIA Sq Ft	Price	
1 Bed Apt								
81	81/1	LG	1	Lancaster Gate	86.0	926	£1,400,000	
4 Bed Triplex Apt								
80	81/3	LG, G, GM	4	Hyde Park & Gardens	260.7	2,806	£5,000,000	
4 Bed Apt								
80	81/6	2nd, 2M	4	Hyde Park	262.5	2,826	£7,950,000	
83	83/6	2nd, 2M	4	Hyde Park	260.4	2,803	£7,950,000	
4 Bed Apt								
Show Apt	81-82	81/5	1st, 1M	4	Hyde Park	500.3	5,385	£16,500,000
Duplex Penthouses								
80-81	81/9	4th, 5th	4	Hyde Park	338.7	3,646	£10,750,000	
82-83	83/7	4th , 5th	4	Hyde Park	338.2	3,640	£10,750,000	

The Lancasters

116, FALINGD?LE?



The Lancasters





The Lancasters





The Lancasters  
116, 118, 120, 122



---

The Lancasters

---





---

## The Lancasters

---



---

The Lancasters

---





---

The Lancasters

---



---

The Lancasters

---





---

## The Lancasters

---



---

## The Lancasters

116 FAUCON?LE?2

---





---

The Lancasters

---



---

The Lancasters

---





---

## The Lancasters

THE EDUCATORS

---



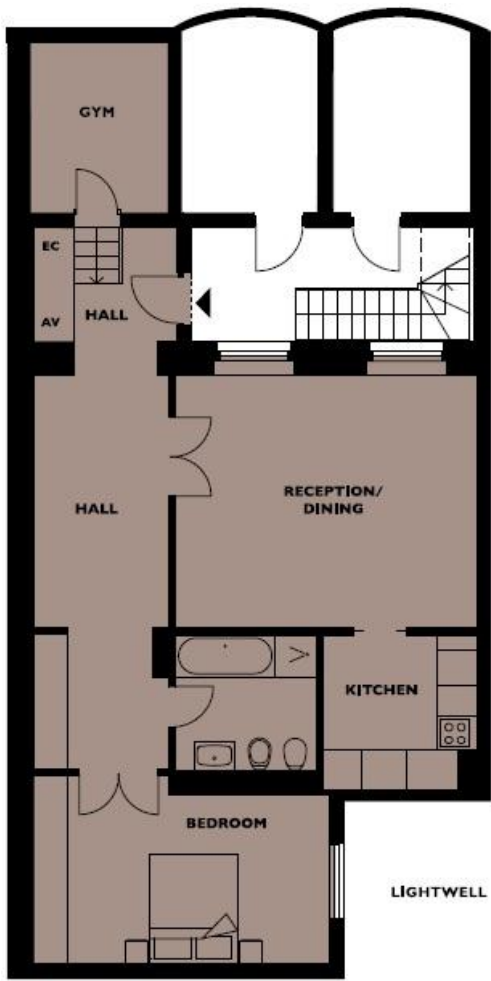
---

## The Lancasters

116 FALCONER ST

---





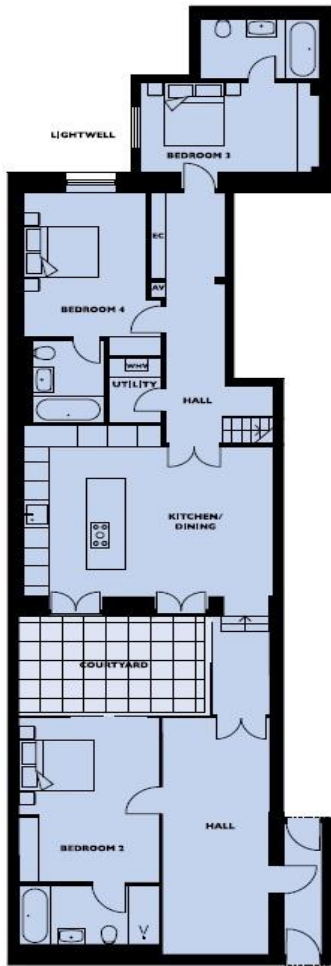
Basement  
D02A11E111

---

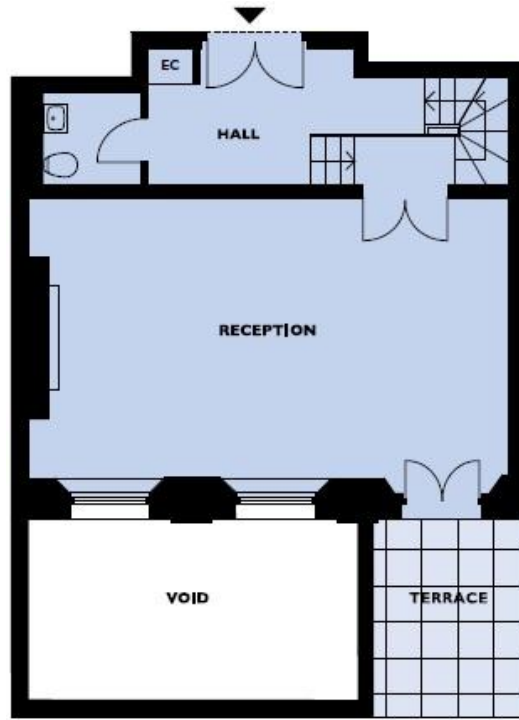
The Lancasters

Apartment 81/1

---



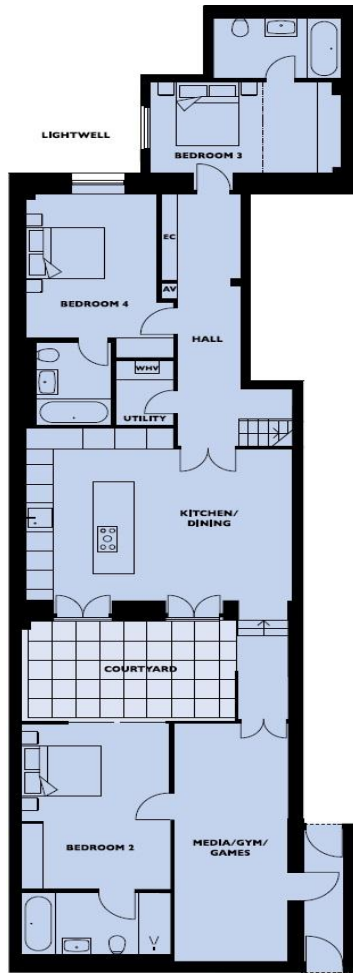
Basement  
DQ2E11E111



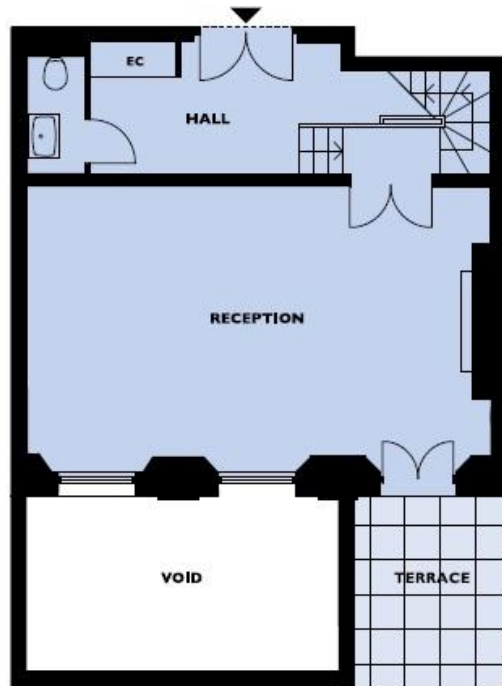
Ground Floor  
G100111111



Mezzanine  
W122011111



Basements  
DQ2E11G112

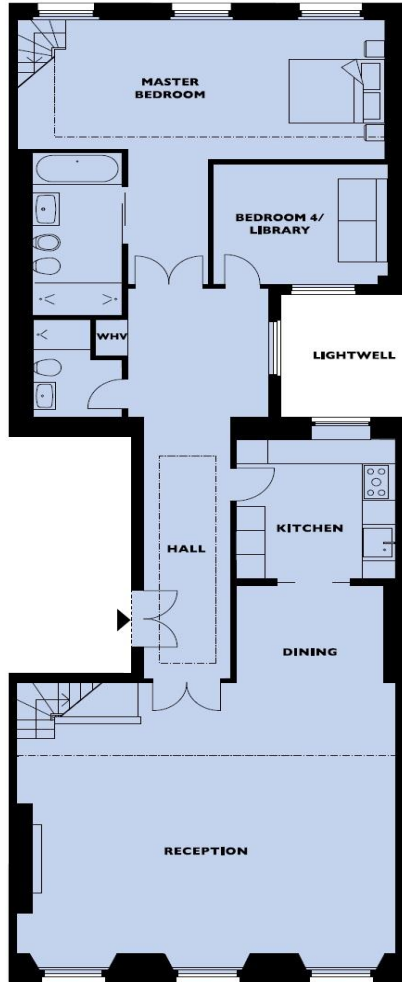


Ground Floor  
G100111101



Mezzanine  
W1221111111





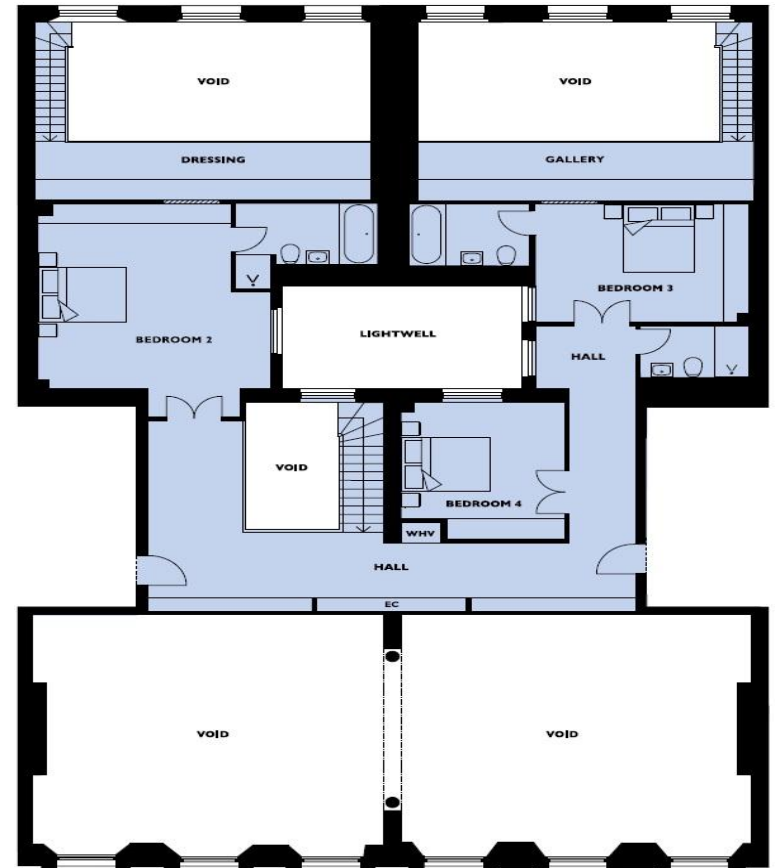
Second Floor



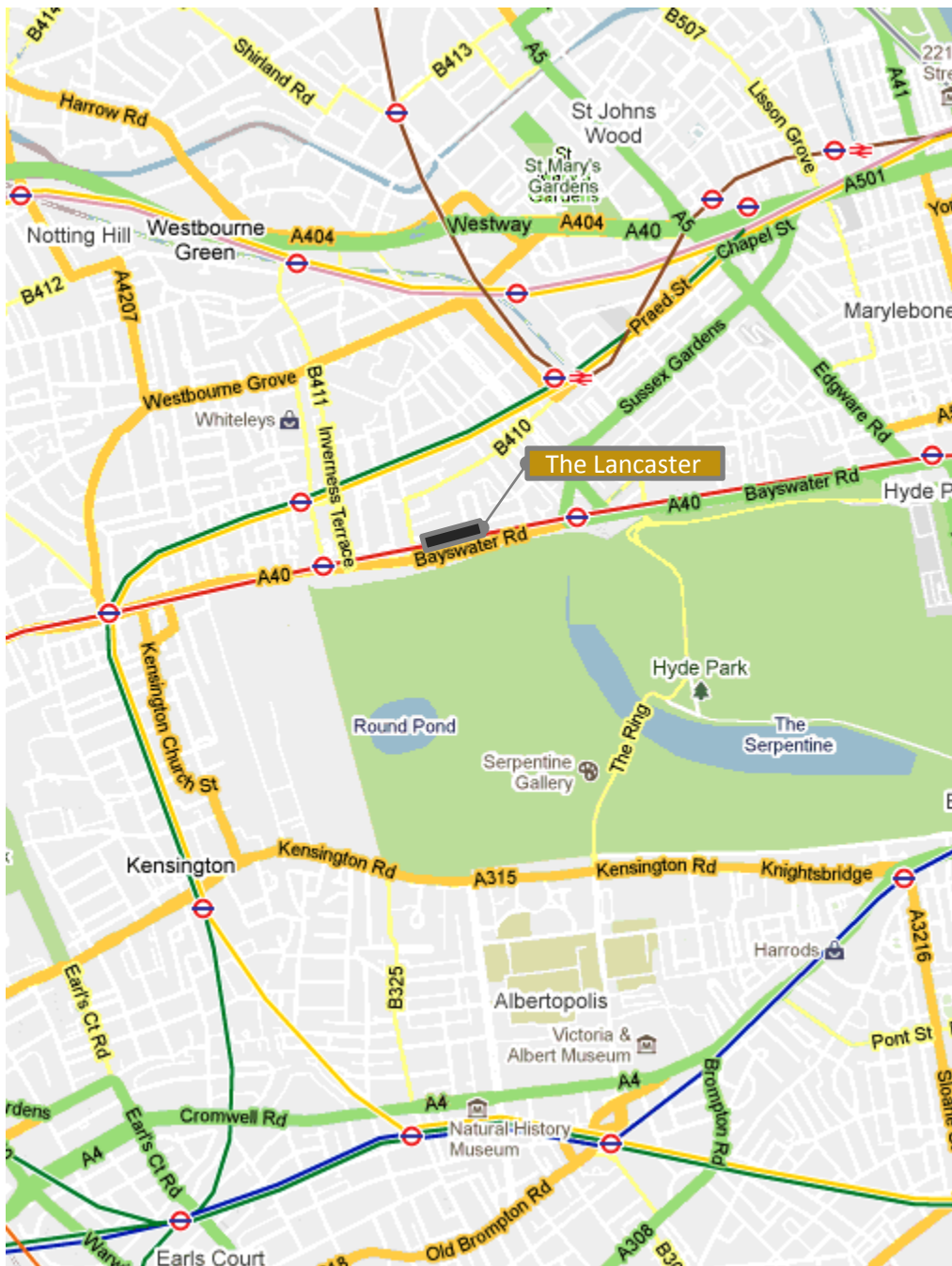
Mezzanine



First floor  
L112111001



Mezzanine  
L112111011



Bayswater is an area of west London in the City of Westminster and the Royal Borough of Kensington and Chelsea to the west. It is a built-up district located 3 miles (4.8 km) west-north-west of Charing Cross, bordering the north of Hyde Park over Kensington Gardens. Bayswater is one of London's most cosmopolitan areas wherein a diverse local population is augmented by a high concentration of hotels. In addition to the ancestral Britons, there is a significant Arab population towards Edgware Road, a large Greek community attracted by London's Greek Orthodox Cathedral, many Americans and London's main Brazilian community. The area has attractive streets and garden squares lined with Victorian stucco terraces, mostly now subdivided into flats and boarding houses. The property ranges from very expensive apartments to small studio flats. There are also purpose-built apartment blocks dating from the inter-war period as well as more recent developments, and a large council estate, the 650-flat Hallfield Estate, designed by Sir Denys Lasdun and now largely sold off. Queensway and Westbourne Grove are its busiest main streets, both having many ethnic-cuisine restaurants