

Gordon House



Gordon House
Richmond, London



Luxurious residence in the territory of the private sector.

- Ballroom / Ballroom possibility of tuning into the pool
- Garage for 4 cars
- Private apartments for staff
- Beautiful garden with fountain
- Library

£ 15 000 000

Freehold

GIA:

1728 m² | 18,600 ft²

Land area:

0,3 ga | 0.74 acr.



Gordon
House

Gordon House



Gordon House

Gordon House



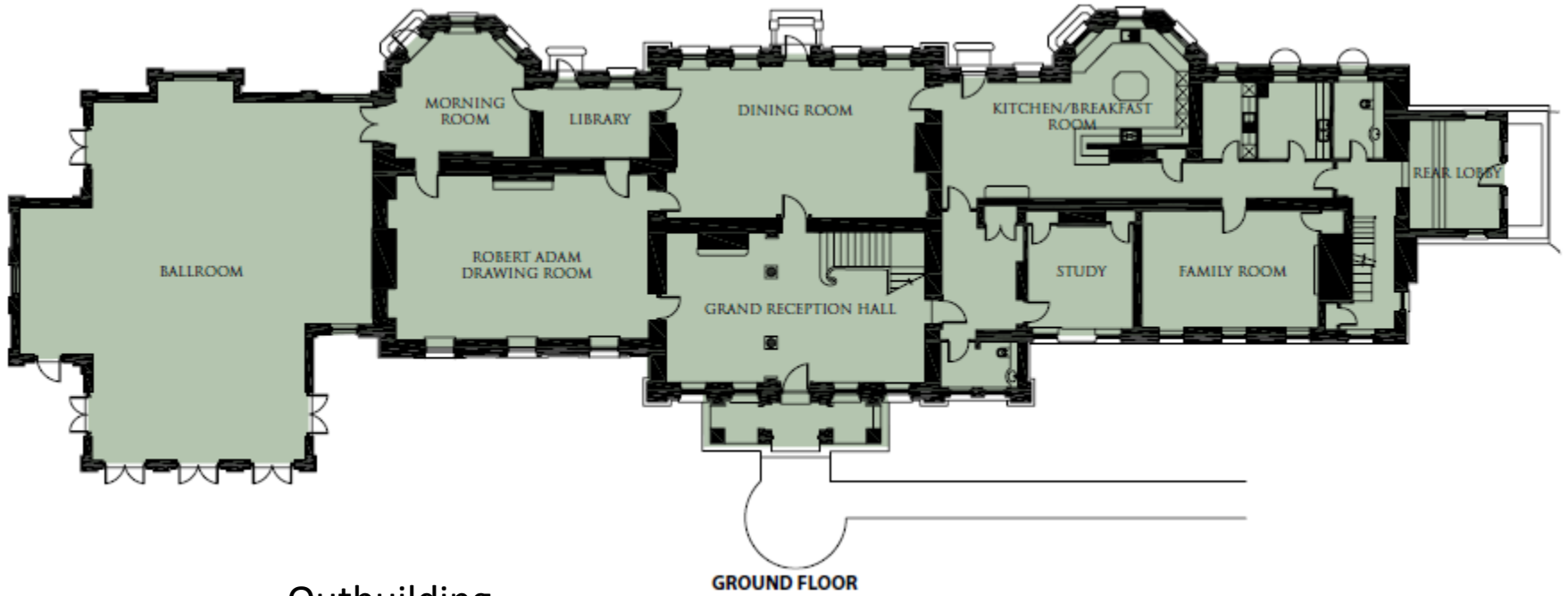
Gordon
House

Gordon House

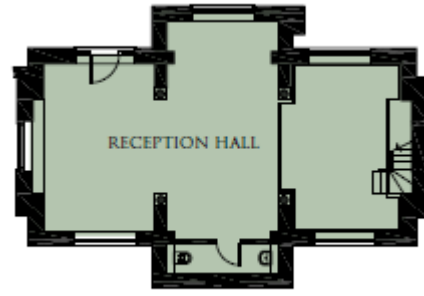
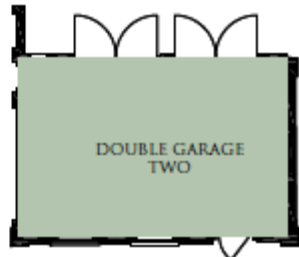
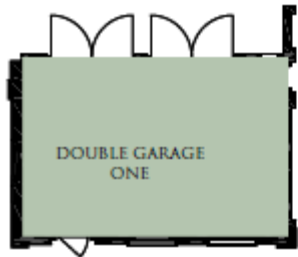


Gordon
House

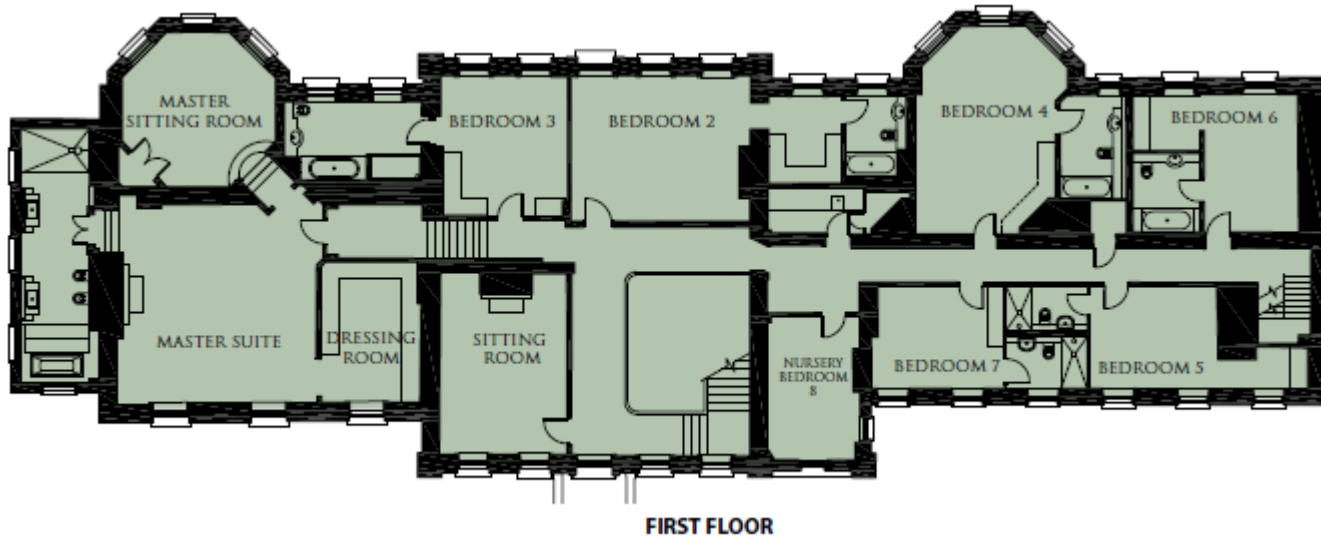
Gordon House



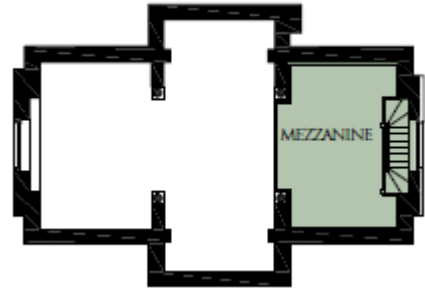
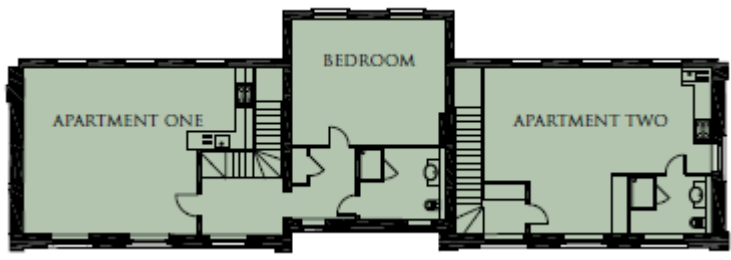
Outbuilding

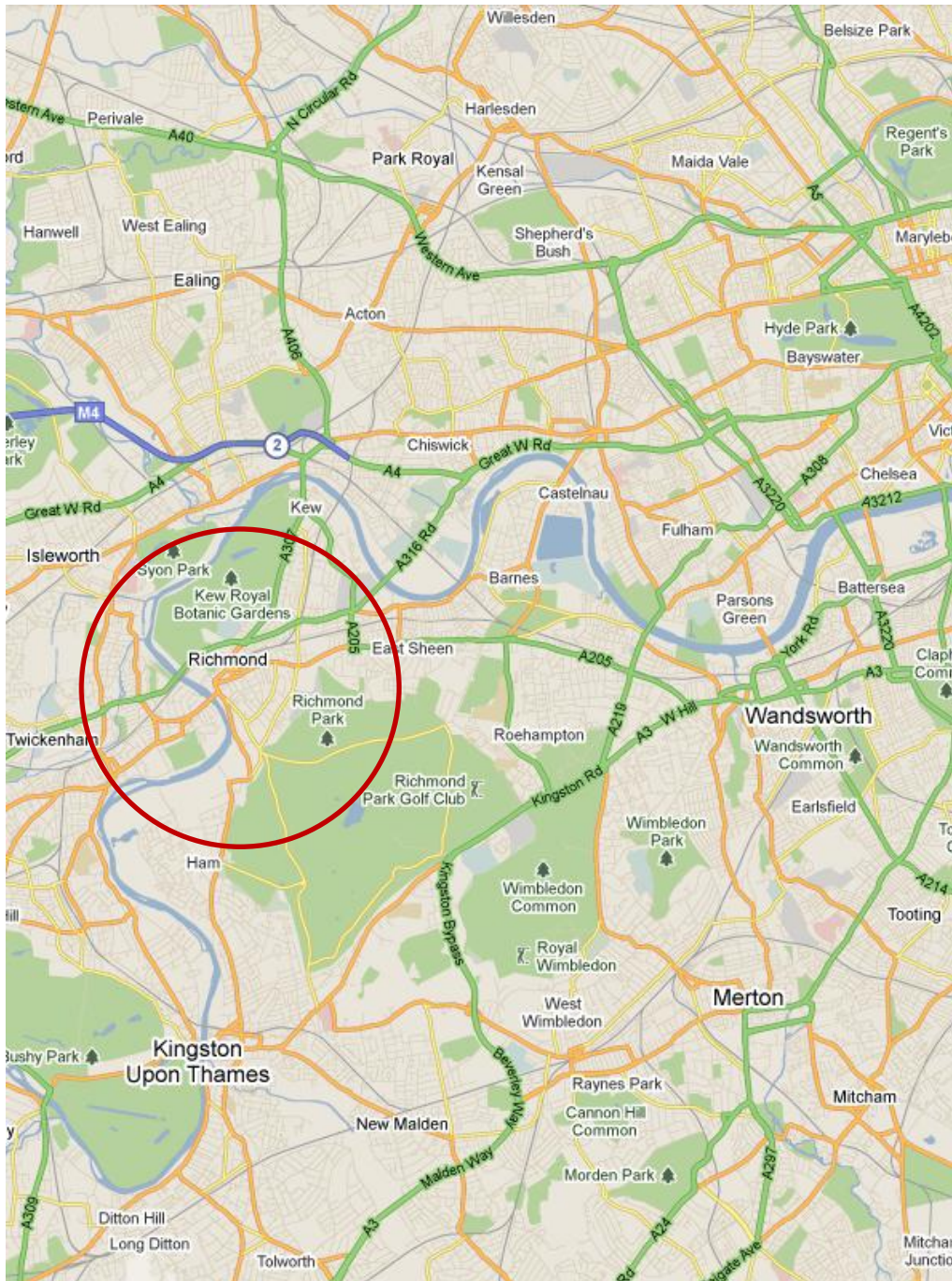


GROUND FLOOR



Outbuilding





Gordon House

Gordon House
Richmond, London

Richmond is a town in southwest London, England and is part of the London Borough of Richmond upon Thames. It is located 8.2 miles (13.2 km) west-southwest of Charing Cross. The formation and naming of the town are due to the building of Richmond Palace early in the 16th century. The development of Richmond as a London suburb began with the opening of the railway station in 1846. It was formerly part of the ancient parish of Kingston upon Thames in the county of Surrey and it became a municipal borough in 1890 that was enlarged in 1892 and 1933. It has formed part of Greater London since 1965. Located on a meander of the River Thames, Richmond now forms a significant local commercial centre with a number of parks and open spaces and has a developed retail and night-time economy.

