



Chesham Place
Wentworth, Surrey

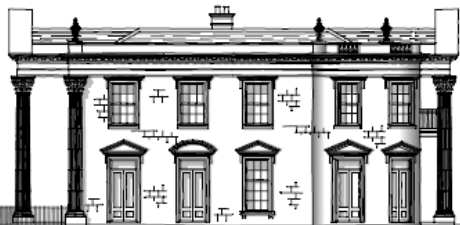
Key Points



FRONT ELEVATION



REAR ELEVATION



SIDE ELEVATION



5 reception rooms

6 bedrooms

10 bathrooms

- Garage for 9 cars
- Gymnasium
- Cinema room
- Library
- Study room
- Wine store
- Lift
- Indoor swimming pool
- Staff accommodation
- Bar area
- SPA
- Sauna
- Massage room
- Games Room
- Large Garden
- Tennis Court

Internal Area:
2,136 m² (23,000 f²)

Site Area:
2 hectares (5 acres)

FREEHOLD

Asking Price: £ 9 000 000

Chesham Place
Wentworth, Surrey



Chesham Place
Wentworth, Surrey



Chesham Place
Wentworth, Surrey



Chesham Place
Wentworth, Surrey



Chesham Place
Wentworth, Surrey



Chesham Place
Wentworth, Surrey



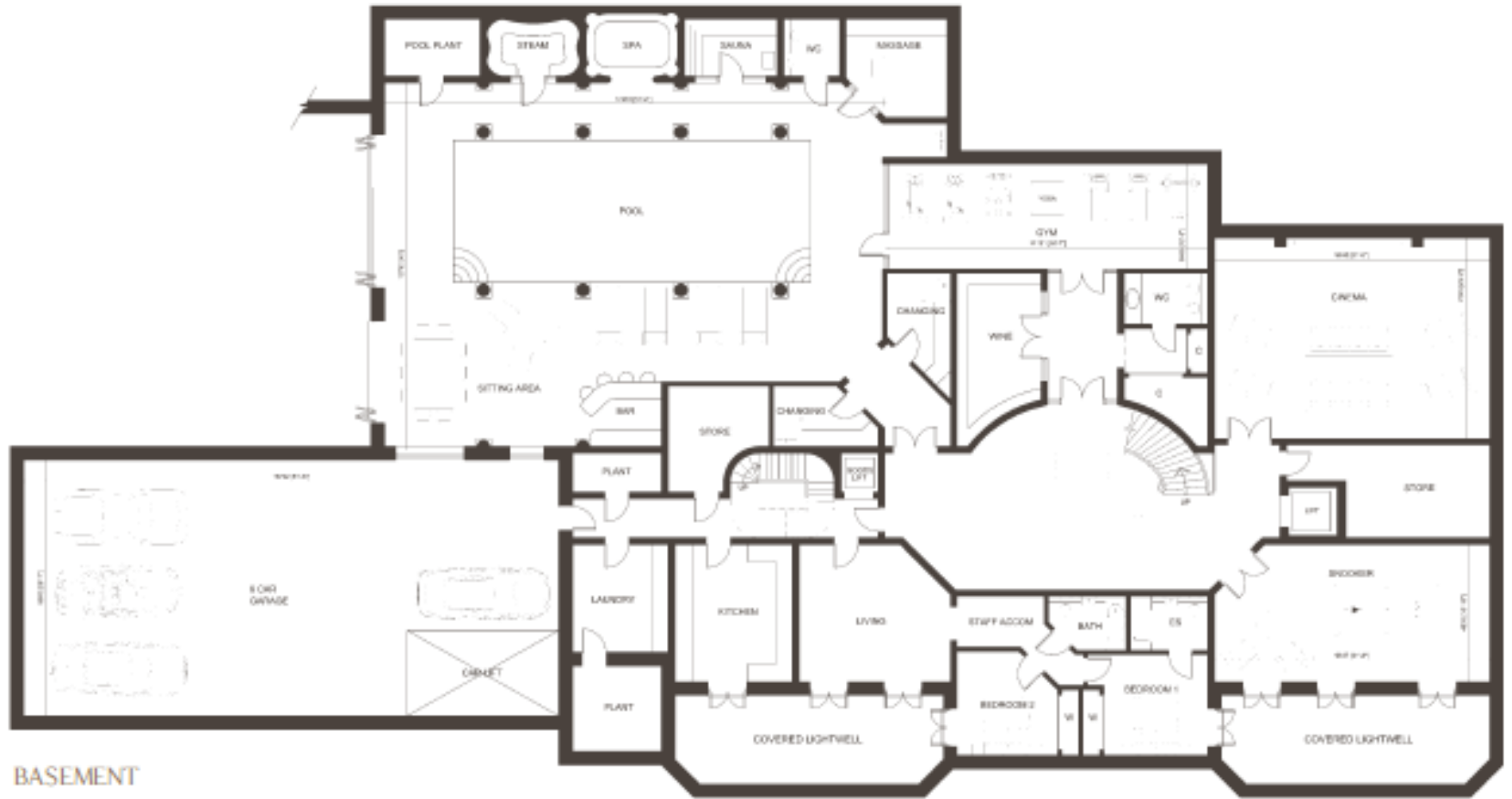
Chesham Place
Wentworth, Surrey



Chesham Place
Wentworth, Surrey



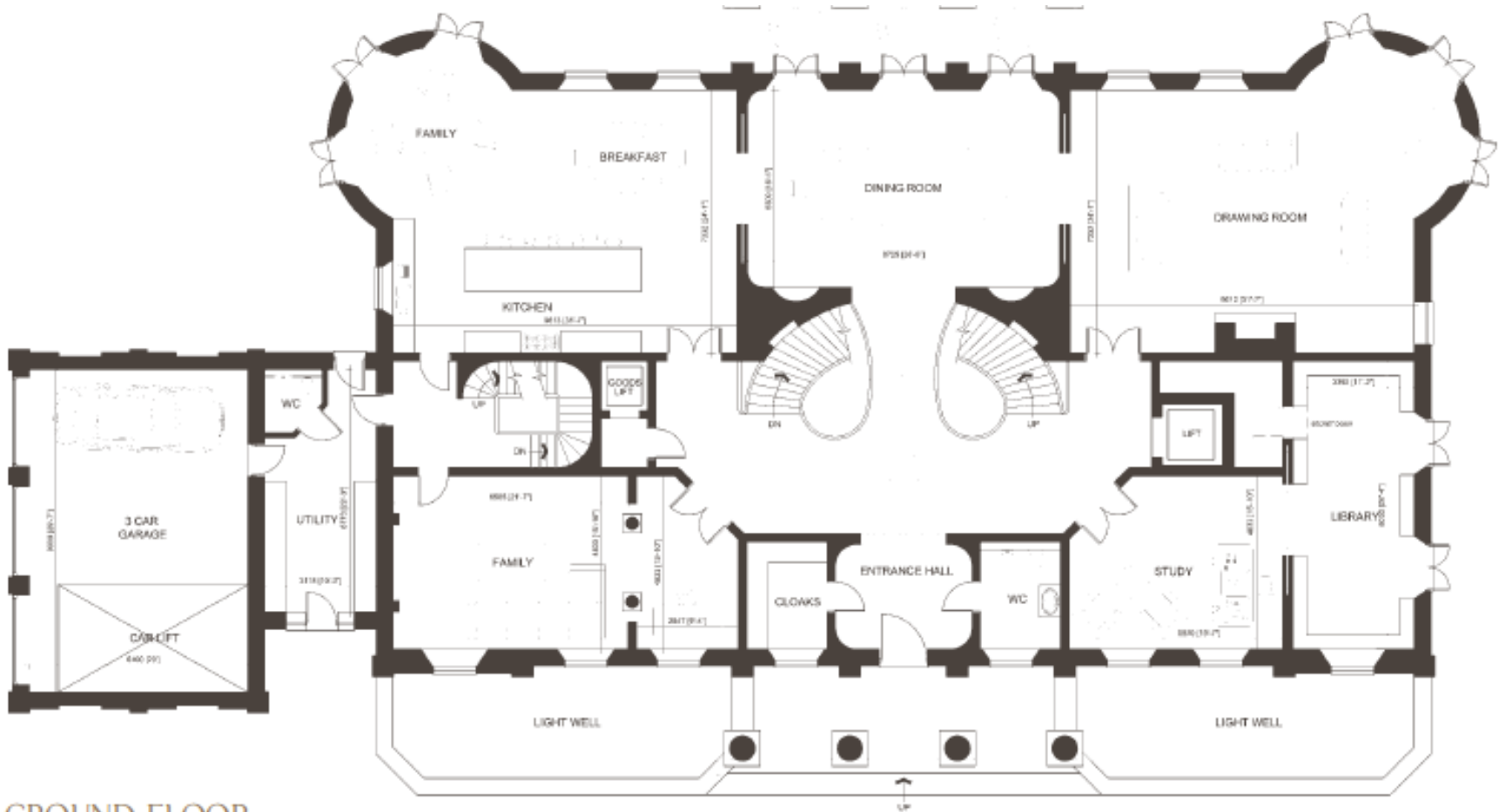
Chesham Place
Wentworth, Surrey



Basement

Chesham Place
Wentworth, Surrey

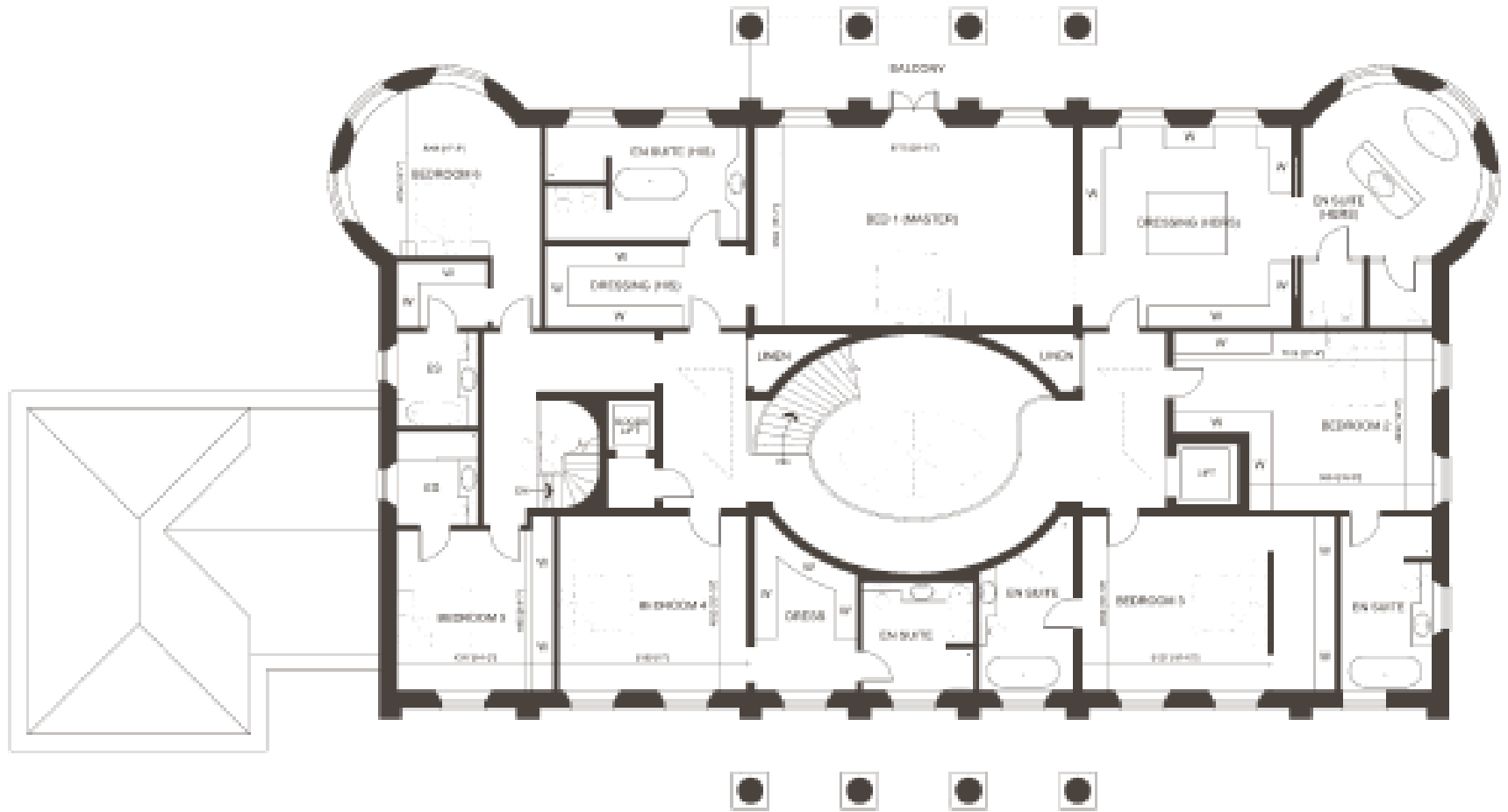
Floor Plan



GROUND FLOOR

Ground Floor

Chesham Place
Wentworth, Surrey



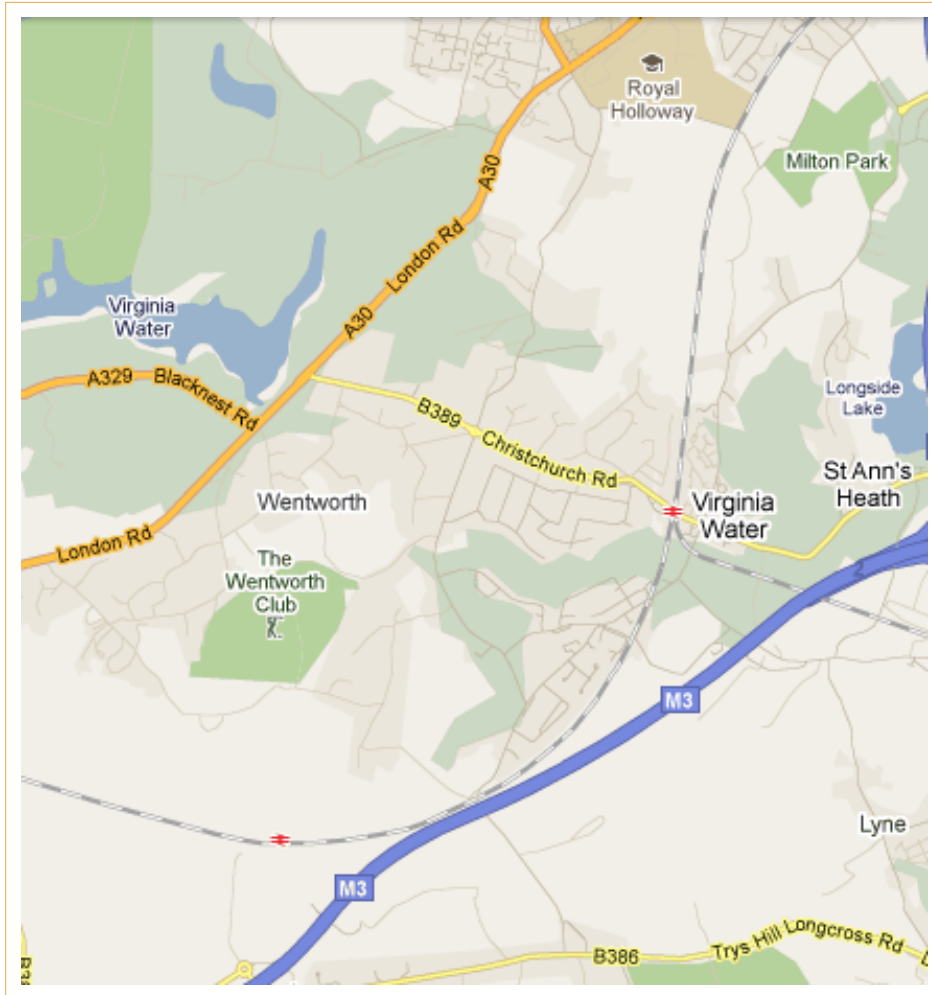
1 Floor

Chesham Place
Wentworth, Surrey



Chesham Place
Wentworth, Surrey

Map



Wentworth, Surrey

The Estate extends to approximately 1,750 acres lying within the Green Belt. Its history dates back to the early 1920s when the visionary developer, W G Tarrant purchased an agricultural estate around which he created his rural dream of substantial mansion houses set in beautiful mature gardens surrounding a golf course.

Today there are 3 championship golf courses, all with illustrious tournament pedigrees. In addition there is the Wentworth Club, home to the BMW PGA championship, with swimming pools, restaurants, tennis courts and a health and leisure club.

The local centers of Virginia Water, Ascot and Sunningdale cater for day to day shopping requirements with the larger towns of Windsor and Camberley within a short drive.

Communications are excellent with the M3 and M4 close by, giving fast access to London, the M25 and the national motorway network, as well as Heathrow and Gatwick airports.

Sporting facilities in the area are numerous and include racing at Ascot and Windsor, polo at Smith's Lawn, Windsor Great Park and the Royal County of Berkshire Polo Club at Winkfield.

Other attractions in the area are Virginia Water Lake, Windsor Castle, Ascot Heath, Thorpe Park and Legoland. Schooling is exceptional with many renowned private schools such as Eton College, Papplewick, Sunningdale, St. Mary's, Hurst Lodge, St. George's, St. John's Beaumont, TASIS and ACS Egham.